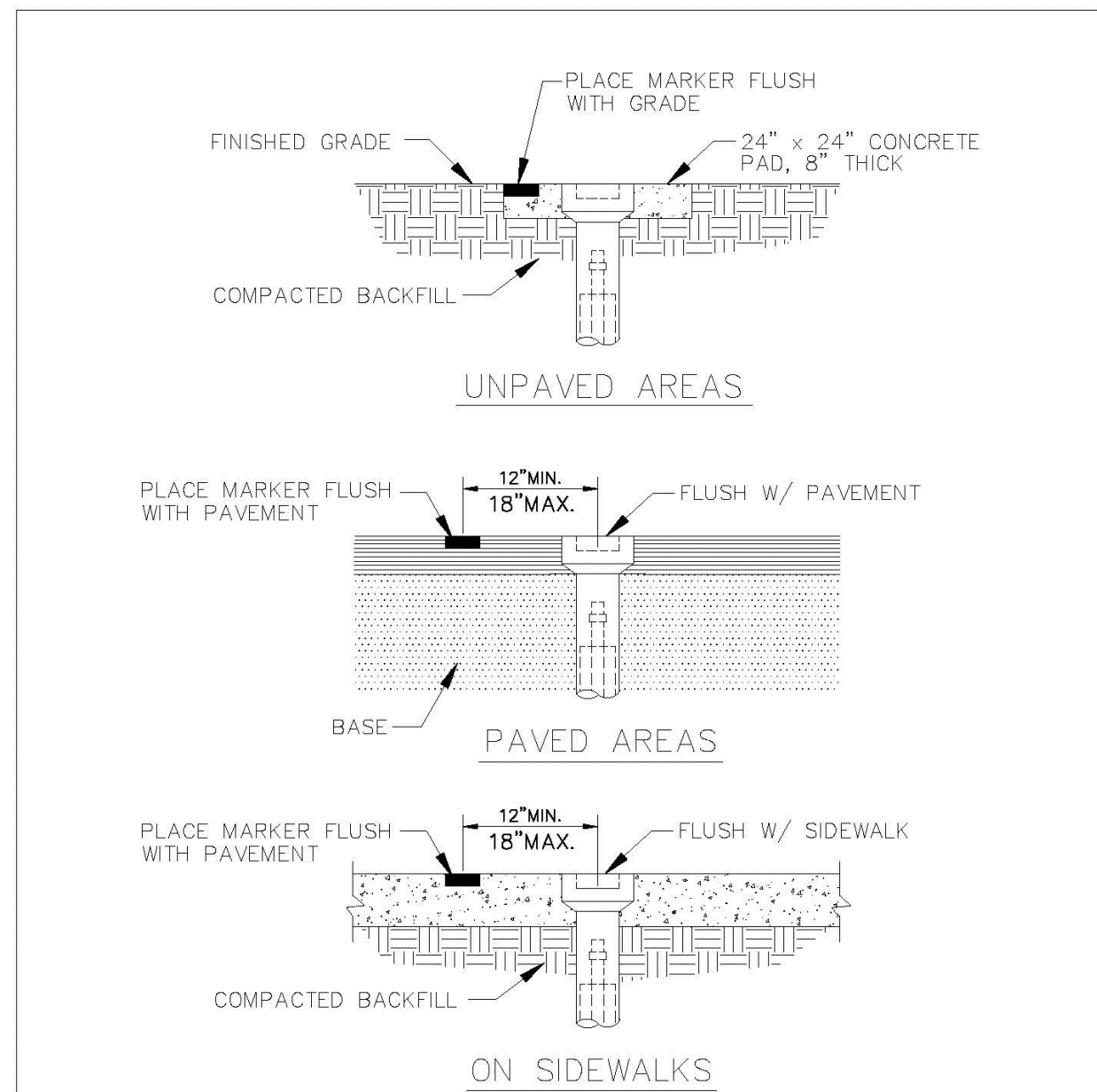
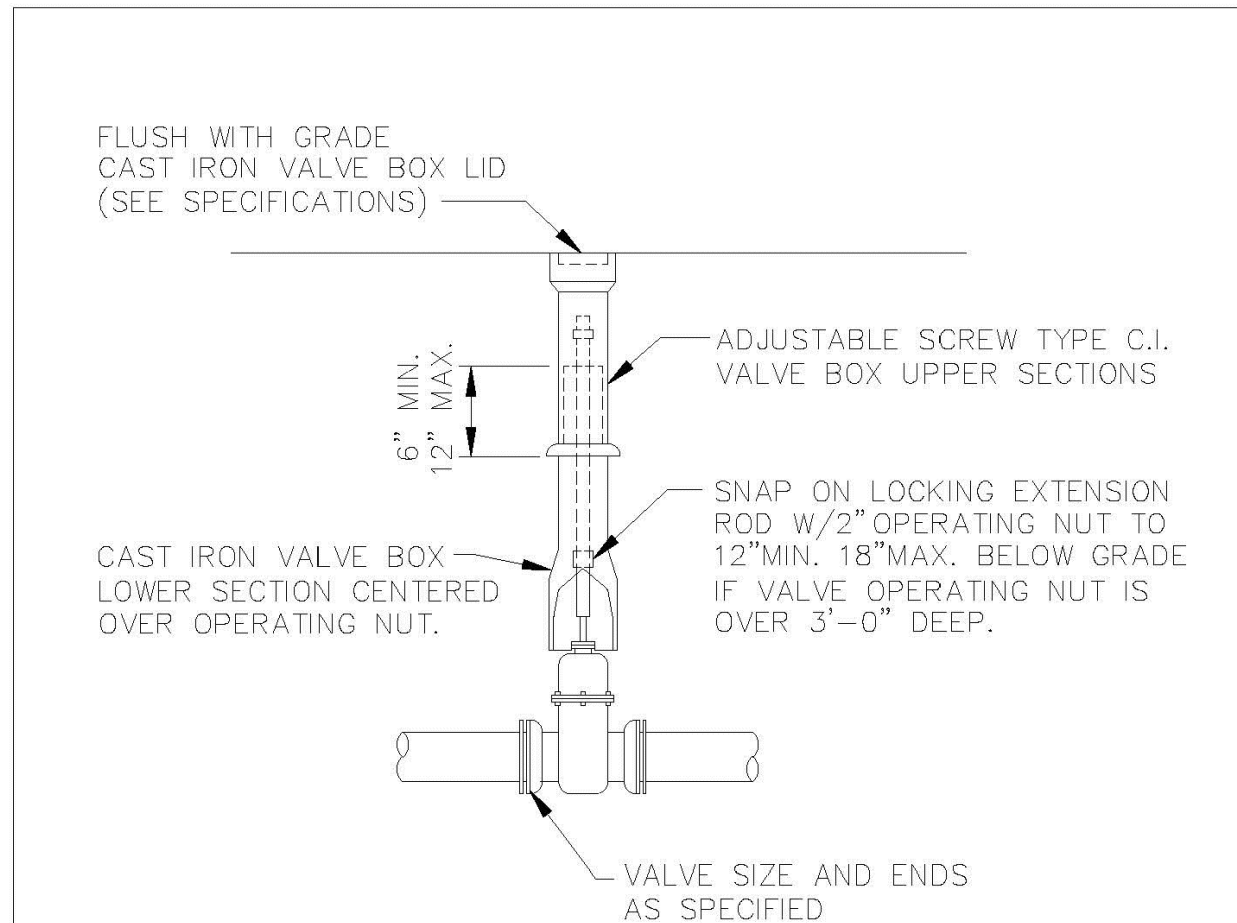


A TAPPING TEE ASSEMBLY DETAIL
SCALE: NTS



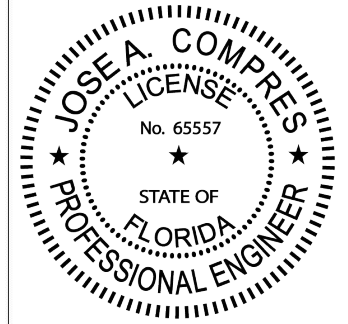
VALVE BOX SETTINGS

ENGINEERING STANDARDS 2022			
REVISIONS	BY	DATE	DATE: MAY 2022
	ENGINEERING DIVISION		102-1
	CITY OF POMPAÑO BEACH		
	SCALE: N.T.S.		



GATE OR PLUG VALVE SETTING

ENGINEERING STANDARDS 2022			
REVISIONS	BY	DATE	DATE: MAY 2022
	ENGINEERING DIVISION		103-1
	CITY OF POMPAÑO BEACH		
	SCALE: N.T.S.		



CONEMCO ENGINEERING, INC.
DBA Conemco Consultants
SBA 8a - Civil - Structural - MEP - CEI - Program Management - Land Surveyors

782 NW 42ND AVENUE UNIT 635
MIAMI, FL 33126
MAIN NUMBER 888-636-1536

CA # 2947

JOSE A. COMPRES, P.E.
FLORIDA P.E. LIC. # 65557

CONEMCO ENGINEERING, INC.

PROJECT NAME / ADDRESS:
324 HAUS MIXED USE / NEW BUILDING - CIVIL PLANS
REDESIGN
324 NW 6TH STREET, POMPAÑO BEACH, FL 33060

CLIENT/TOWNER:
AUSTIN FOX ARCHITECTURE
1754 E COMMERCIAL BLVD, FORT LAUDERDALE, FL 33334

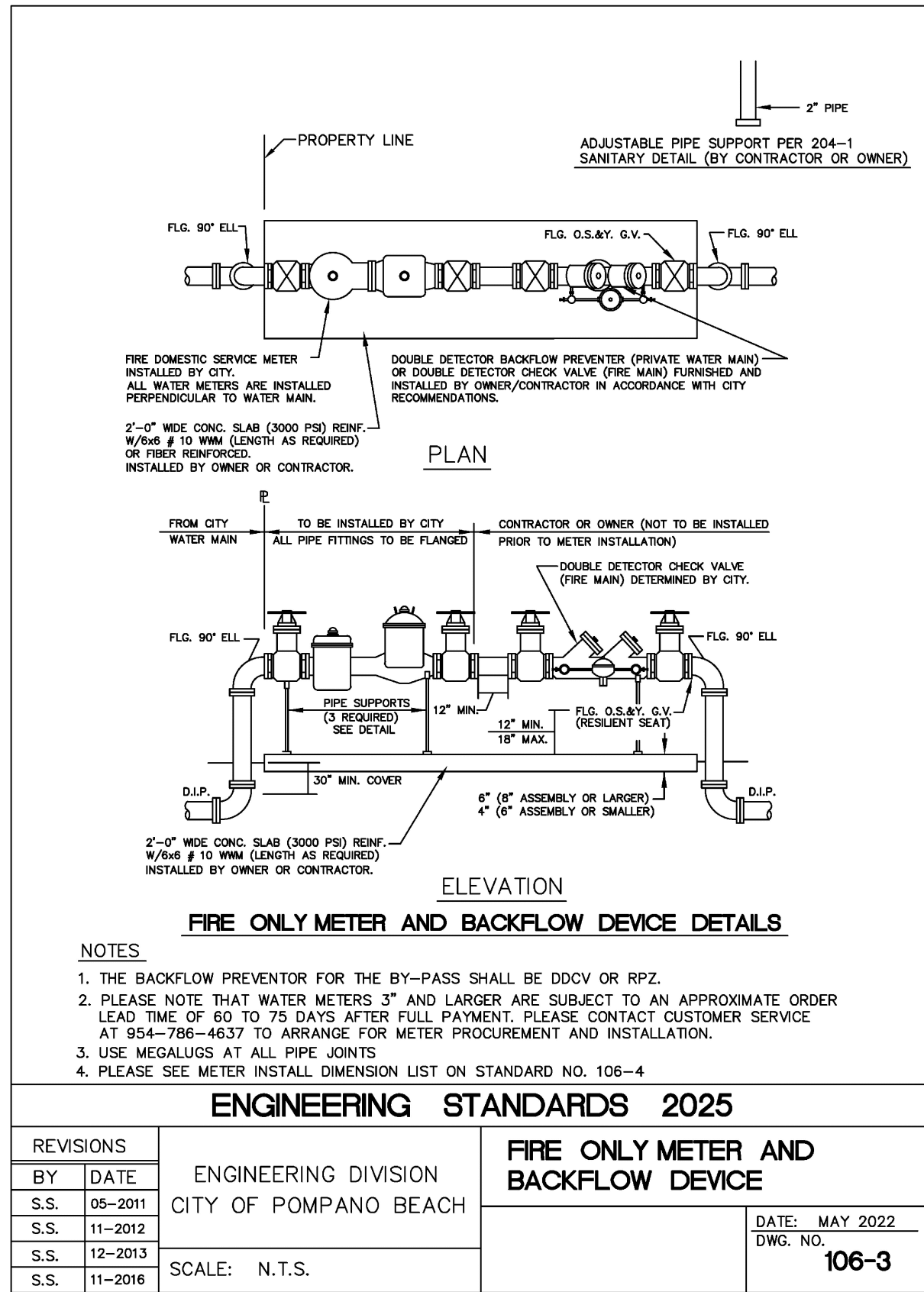
REVISIONS	DATE

DATE:	9/12/2025
SCALE:	AS SHOWN
DRAWN:	FP
CHECKED:	PS
APPVD:	JC
PROJECT ID:	FPV-C251004
CONTRACT NO:	-

SHEET NAME:
GENERAL WATER AND SEWER DETAILS

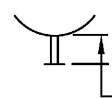
DRAWING NO.
C-505

P222- 12000032 No.
02/25/2026 OF 18



ENGINEERING STANDARDS 2025

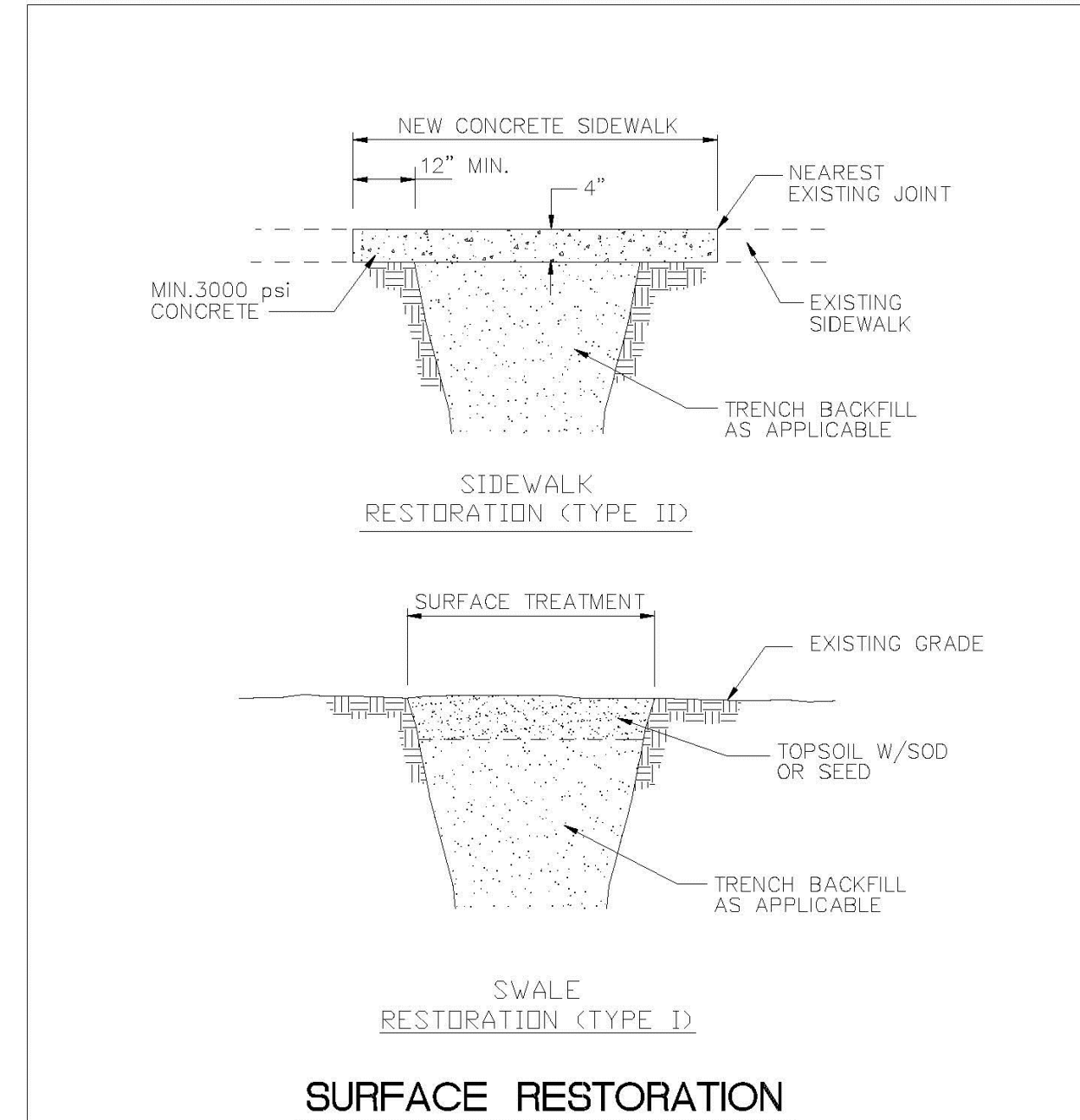
REVISIONS	BY	DATE	DATE: MAY 2022
	ENGINEERING DIVISION		106-3
	CITY OF POMPAÑO BEACH		
	SCALE: N.T.S.		

FIRE METERS - OS & Y VALVES, GASKETS & METER				 2" MIN. TRAVEL	
(NEPTUNE MACH 10 Ultrasonic Meter)					
SIZE	VALVES (2)	GASKETS (4)	METER w/ Strainer	TOTAL LENGTH	
3" w/ 4" X 3" Reducer **	16"	1/2"	30" **	48 1/2"	
4"	18"	1/2"	27 1/2"	46"	
6"	21"	1/2"	33"	54 1/2"	
8"	23"	1/2"	30"	53 1/2"	
10"	26"	1/2"	41"	67 1/2"	
FIRE &/or Domestic Water SERVICE METERS - TEES, OS & Y VALVES, GASKETS & METERS					
(NEPTUNE MACH 10 Ultrasonic Meter)					
SIZE	TEES (2)	VALVES (2)	GASKETS (6)	Strainer	TOTAL LENGTH
3" w/ 4" X 3" Reducer **	3" X 3" - 22"	16"	3/4"	30" **	68 3/4"
4"	4" X 3" - 26"	18"	3/4"	27 1/2"	72 1/4"
6"	6" X 4" - 32"	21"	3/4"	33"	86 3/4"
8"	8" X 4" - 36"	23"	3/4"	30"	89 3/4"
10"	10" X 6" - 44"	26"	3/4"	41"	111 3/4"

*All fittings, valves and meters are flanged & all dimensions are from face of flange to face of flange.

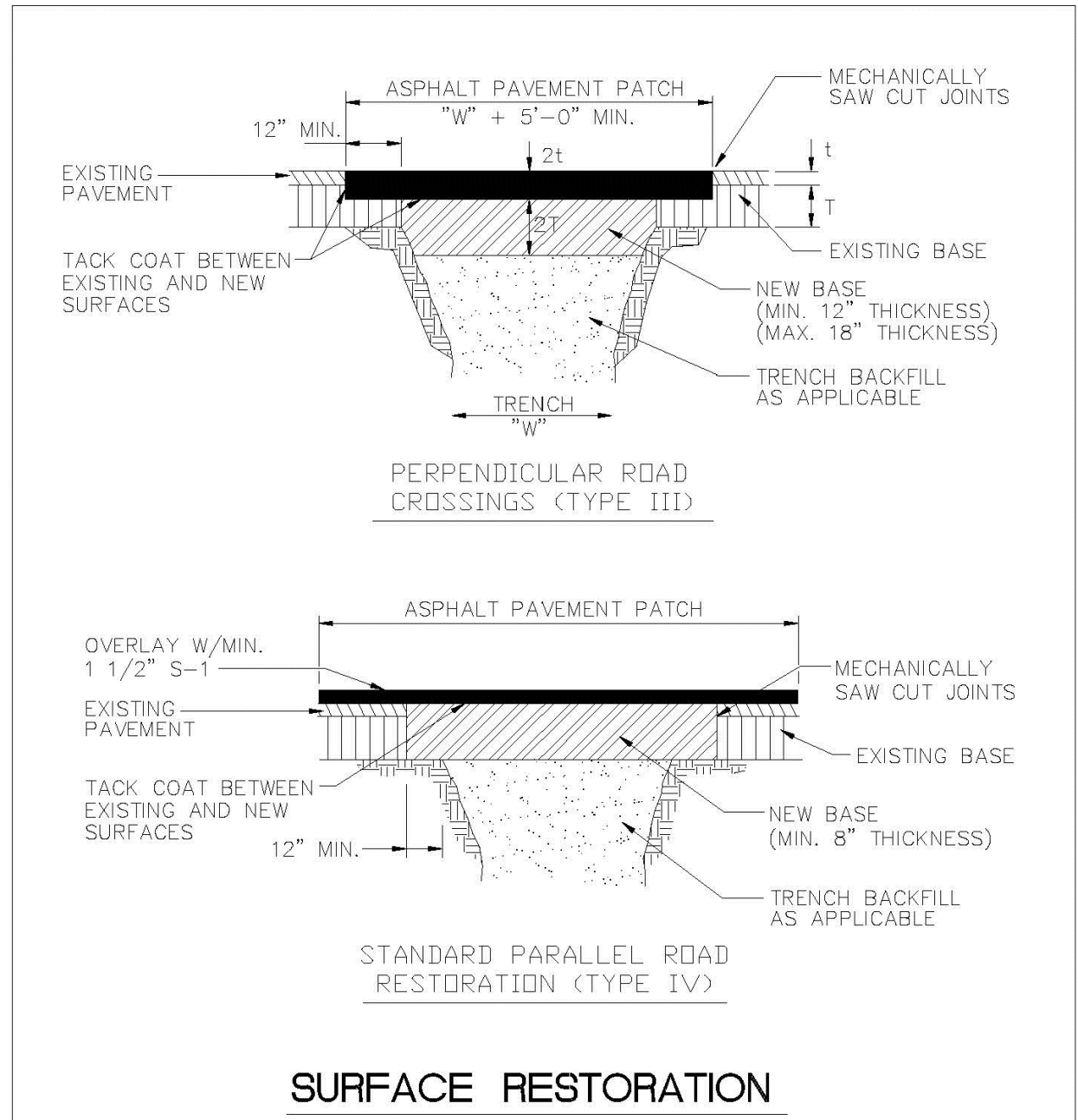
NOTE:
PLEASE NOTE THAT WATER METERS 3" AND LARGER ARE SUBJECT TO AN APPROXIMATE ORDER LEAD TIME OF 60 TO 75 BUSINESS DAYS AFTER FULL PAYMENT. PLEASE CONTACT CUSTOMER SERVICE AT 954-786-4637 TO ARRANGE FOR METER PROCUREMENT AND INSTALLATION. LARGE METERS MUST BE AT MINIMUM ORDERED PRIOR TO INITIAL INSPECTIONS.

ENGINEERING STANDARDS 2025			
REVISIONS	BY	DATE	DATE: JAN. 2022
	ENGINEERING DIVISION		106-4
	CITY OF POMPAÑO BEACH		
	SCALE: N.T.S.		



ENGINEERING STANDARDS 2022

REVISIONS	BY	DATE	DATE: MAY 2022
	ENGINEERING DIVISION		306-1
	CITY OF POMPAÑO BEACH		
	SCALE: N.T.S.		



ENGINEERING STANDARDS 2022

REVISIONS	BY	DATE	DATE: MAY 2022
	ENGINEERING DIVISION		306-2
	CITY OF POMPAÑO BEACH		
	SCALE: N.T.S.		